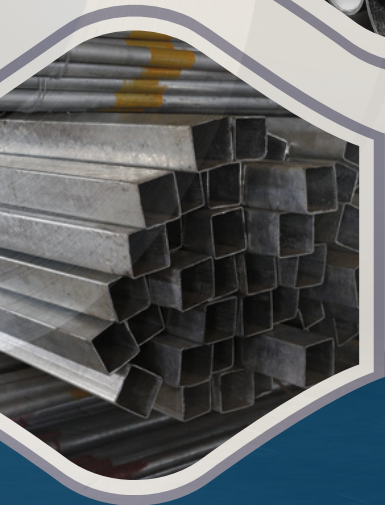
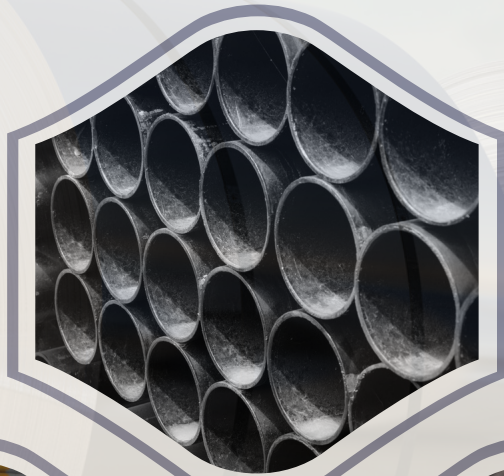




SASI INDUSTRIES



TRADER

SUPPLIER

EXPORTER

TABLE OF CONTENTS

About Us **3**

Message From Founders **4**

Why Sasi Industries **5**

Our Services **6**

Product Catalogue **8**

Technical Data **9-10**

Brand Value **11**



SASI INDUSTRIES

Sasi Industries, a renowned Exporter and Distributor, excels in supplying top-quality Industrial pipes and tubes. Our esteemed team boasts extensive expertise exclusively focused on the design and production of pipes. With a proven track record of delivering excellence, we prioritize precision engineering and superior quality in every product we offer. Our commitment to innovation ensures cutting-edge solutions tailored to meet the diverse needs of our clientele. Count on Sasi Industries for reliable, durable, and efficient piping solutions that exceed industry standards. Experience the difference with us, where quality and reliability converge seamlessly. Trust Sasi Industries for your industrial piping needs, and let us elevate your operations to new heights.

FOUNDER'S MESSAGE

As going forward, we are considering evolving our Metal Trading Business chain further in India.

We at SteelJunction believe that change is the only constant which spurs us to stay one step ahead and anticipate future needs. As we progress year after year, we are dawning not only on the potential offered by the Sasi Industries as one of the India's leading Metal Trading business, but also the opportunities in rapidly growing Metal Trading market across India.

WHY SASI INDUSTRIES

- 01 HIGH QUALITY PRODUCT
- 02 COST EFFECTIVE PRICING
- 03 MANUFACTURING WITH ADVANCED TECHNOLOGY
- 04 DELIVERY ON TIME ANY WHERE IN INDIA
- 05 MULTIPLE QUALITY CHECKS TO ENSURE BEST QUALITY
- 06 PROFESSIONALS FROM EXPERIENCED BACK GROUND

Our SERVICE

Since it's inception, Sasi Industries has been working on multiple business verticles as Supplier ,Exporter, Distribution & Trader.



TRADER

We trade in online and offline platform across India



SUPPLIER

We have established our supply chain across India



EXPORTER

We have multiple export channels for more than 7 countries



B2B

Clients in our business segment are complex because their requirements are part of a much larger process. In our B2B system clients are industry leaders, so we ensure customer satisfaction during the whole buying cycle including price points and delivery.



B2C

In our B2C segment of Business, we often work in supplier more where competitive rates are important as timely delivery along with tested product quality in accordance with various end customer groups in the market.



MS PRODUCT RANGE



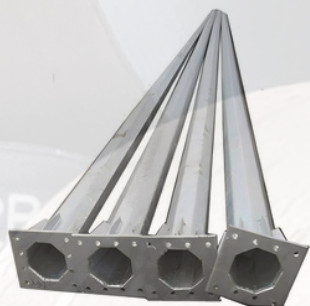
GI Pipes



Black/ERW Pipes



Rejection Pipes



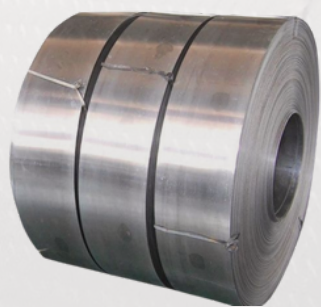
Steel Tubular Poles



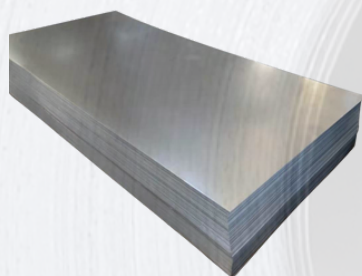
Solar rooftop structure



Metal Crash Barriers



CRCA Coils



CR sheet



Strips



HR Coil



MS Bundle Scrap



MS Wires

TECHNICAL DATA OF BLACK & GALVANISHED STEEL TUBES AS PER IS-1239(PART-1)/EN:10255

| NOMINAL BORE (NB) mm inches | CLASS | OUTSIDE DIAMETER | | WALL THICKNESS | | PLAIN ENDS | | SCREWED & SOCKETED | |
|-----------------------------------|-------|------------------|-----------|----------------|-----|------------|------------|--------------------|------------|
| | | MIN MM | MAX MM | MM | SWG | Kg/Mg | Mtrs/Tonne | Kg/Mtr | Mtrs/Tonne |
| 15 (½") | L | 21.00 | 21.40 | 2.00 | 14 | 0.947 | 1056 | 0.956 | 1046 |
| | M | 21.00 | 21.80 | 2.60 | 12 | 1.21 | 826 | 1.22 | 820 |
| | H | 21.00 | 21.80 | 3.20 | 10 | 1.44 | 694 | 1.45 | 690 |
| 20 (¾") | L | 26.40 | 26.90 | 2.30 | 13 | 1.38 | 725 | 1.39 | 719 |
| | M | 26.50 | 27.30 | 2.60 | 12 | 1.56 | 641 | 1.57 | 637 |
| | H | 26.50 | 27.30 | 3.20 | 10 | 1.87 | 535 | 1.88 | 532 |
| 25 (1") | L | 33.20 | 33.80 | 2.60 | 12 | 1.98 | 505 | 2.00 | 500 |
| | M | 33.30 | 34.20 | 3.20 | 10 | 2.41 | 415 | 2.43 | 412 |
| | H | 33.30 | 34.20 | 4.00 | 8 | 2.93 | 341 | 2.95 | 339 |
| 32 (1¼") | L | 41.90 | 42.50 | 2.60 | 12 | 2.54 | 394 | 2.57 | 389 |
| | M | 42.00 | 42.90 | 3.20 | 10 | 3.10 | 323 | 3.13 | 319 |
| | H | 42.00 | 42.90 | 4.00 | 8 | 3.79 | 264 | 3.82 | 262 |
| 40 (1½") | L | 47.80 | 48.40 | 2.90 | 11 | 3.23 | 310 | 3.27 | 306 |
| | M | 47.90 | 48.80 | 3.20 | 10 | 3.56 | 281 | 3.60 | 278 |
| | H | 47.90 | 48.80 | 4.00 | 8 | 4.37 | 229 | 4.41 | 227 |
| 50 (2") | L | 59.60 | 60.20 | 2.90 | 11 | 4.08 | 245 | 4.15 | 241 |
| | M | 59.70 | 60.80 | 3.60 | 9 | 5.03 | 199 | 5.10 | 196 |
| | H | 59.70 | 60.80 | 4.50 | 7 | 6.19 | 162 | 6.26 | 160 |
| 65 (2½") | L | 75.20 | 76.00 | 3.20 | 10 | 5.17 | 175 | 5.83 | 172 |
| | M | 75.30 | 76.60 | 3.60 | 9 | 6.42 | 156 | 6.54 | 153 |
| | H | 75.30 | 76.60 | 4.50 | 7 | 7.93 | 126 | 8.05 | 124 |
| 80 (3") | L | 87.90 | 88.70 | 3.20 | 10 | 6.72 | 149 | 6.89 | 145 |
| | M | 88.00 | 89.50 | 4.00 | 8 | 8.36 | 120 | 8.53 | 117 |
| | H | 88.00 | 89.50 | 4.80 | 6 | 9.90 | 101 | 10.10 | 99 |
| 100 (4") | L | 113.00 | 113.90 | 3.60 | 9 | 9.75 | 103 | 10.00 | 100 |
| | M | 113.10 | 115.00 | 4.50 | 7 | 12.20 | 82 | 12.50 | 80 |
| | H | 113.10 | 115.00 | 5.40 | 5 | 14.50 | 69 | 14.80 | 68 |
| 125 (5") | M | 138.50 | 140.80 | 4.80 | 6 | 15.90 | 63 | 16.40 | 61 |
| | H | 138.50 | 140.80 | 5.40 | 5 | 17.90 | 56 | 18.40 | 54 |
| 150 (6") | M | 163.90 | 166.50 | 4.80 | 6 | 18.90 | 53 | 19.50 | 51 |
| | H | 163.90 | 166.50 | 5.40 | 5 | 21.30 | 47 | 21.90 | 46 |

| NSE Designator | DN Designator | Outside Diameter | | Wall Thickness | | Mass of Plain End Pipes | | Test Pressure | |
|----------------|---------------|------------------|-------|----------------|-------|-------------------------|-------|---------------|------|
| | | inch | mm | inch | mm | Kg./Mtr | lb/ft | Mpa | Mpa |
| ½ | 15 | 0.840 | 21.3 | 0.109 | 2.77 | 1.27 | 0.83 | 4.8 | 4.8 |
| ¾ | 20 | 1.050 | 26.7 | 0.113 | 2.87 | 1.69 | 1.13 | 4.8 | 4.8 |
| 1 | 25 | 1.315 | 33.4 | 0.133 | 3.38 | 2.50 | 1.68 | 4.8 | 4.8 |
| 1 ¼ | 32 | 1.660 | 42.2 | 0.140 | 3.56 | 3.39 | 2.27 | 8.3 | 9.0 |
| 1 ½ | 40 | 1.900 | 48.3 | 0.145 | 3.68 | 4.05 | 2.72 | 8.3 | 9.0 |
| 2 | 50 | 2.375 | 60.3 | 0.154 | 3.91 | 5.44 | 3.66 | 15.9 | 17.2 |
| 2 ½ | 65 | 2.875 | 73.0 | 0.203 | 5.16 | 8.63 | 5.80 | 17.2 | 17.2 |
| 3 | 80 | 3.500 | 88.9 | 0.216 | 5.49 | 11.29 | 7.58 | 15.3 | 17.2 |
| 3 ½ | 90 | 4.000 | 101.6 | 0.226 | 5.74 | 13.57 | 9.12 | 14.0 | 16.3 |
| 4 | 100 | 4.500 | 114.3 | 0.237 | 6.02 | 16.07 | 10.80 | 13.1 | 15.2 |
| 5 | 125 | 5.563 | 141.3 | 0.258 | 6.55 | 21.77 | 14.63 | 11.5 | 13.4 |
| 6 | 150 | 6.625 | 168.3 | 0.280 | 7.11 | 28.26 | 18.99 | 10.5 | 12.3 |
| 8 | 200 | 8.625 | 219.1 | 0.322 | 8.18 | 42.55 | 28.58 | 9.2 | 10.8 |
| 10 | 250 | 10.750 | 273.0 | 0.365 | 9.27 | 60.29 | 40.52 | 8.4 | 9.9 |
| 12 | 300 | 12.750 | 323.8 | 0.406 | 10.31 | 79.70 | 53.57 | 7.9 | 9.2 |

Note - Special Sizes Available on Demand

Dimensions of Black & Galvanized MS Steel Tubes

AS PER IS - 1239 (Part-1) / BS : 1387/ 1985

| NOMINAL BORE (NB) mm inches | CLASS | OUTSIDE DIAMETER | | WALL THICKNESS | | PLAIN ENDS | | SCREWED & SOCKETED | |
|-----------------------------------|-------|------------------|-----------|----------------|-----|------------|------------|--------------------|------------|
| | | MIN MM | MAX MM | MM | SWG | Kg/Mg | Mtrs/Tonne | Kg/Mtr | Mtrs/Tonne |
| 15 (½") | L | 21.00 | 21.40 | 2.00 | 14 | 0.947 | 1056 | 0.956 | 1046 |
| | M | 21.00 | 21.80 | 2.60 | 12 | 1.21 | 826 | 1.22 | 820 |
| | H | 21.00 | 21.80 | 3.20 | 10 | 1.44 | 694 | 1.45 | 690 |
| 20 (¾") | L | 26.40 | 26.90 | 2.30 | 13 | 1.38 | 725 | 1.39 | 719 |
| | M | 26.50 | 27.30 | 2.60 | 12 | 1.56 | 641 | 1.57 | 637 |
| | H | 26.50 | 27.30 | 3.20 | 10 | 1.87 | 535 | 1.88 | 532 |
| 25 (1") | L | 33.20 | 33.80 | 2.60 | 12 | 1.98 | 505 | 2.00 | 500 |
| | M | 33.30 | 34.20 | 3.20 | 10 | 2.41 | 415 | 2.43 | 412 |
| | H | 33.30 | 34.20 | 4.00 | 8 | 2.93 | 341 | 2.95 | 339 |
| 32 (1¼") | L | 41.90 | 42.50 | 2.60 | 12 | 2.54 | 394 | 2.57 | 389 |
| | M | 42.00 | 42.90 | 3.20 | 10 | 3.10 | 323 | 3.13 | 319 |
| | H | 42.00 | 42.90 | 4.00 | 8 | 3.79 | 264 | 3.82 | 262 |
| 40 (1½") | L | 47.80 | 48.40 | 2.90 | 11 | 3.23 | 310 | 3.27 | 306 |
| | M | 47.90 | 48.80 | 3.20 | 10 | 3.56 | 281 | 3.60 | 278 |
| | H | 47.90 | 48.80 | 4.00 | 8 | 4.37 | 229 | 4.41 | 227 |
| 50 (2") | L | 59.60 | 60.20 | 2.90 | 11 | 4.08 | 245 | 4.15 | 241 |
| | M | 59.70 | 60.80 | 3.60 | 9 | 5.03 | 199 | 5.10 | 196 |
| | H | 59.70 | 60.80 | 4.50 | 7 | 6.19 | 162 | 6.26 | 160 |
| 65 (2½") | L | 75.20 | 76.00 | 3.20 | 10 | 5.17 | 175 | 5.83 | 172 |
| | M | 75.30 | 76.60 | 3.60 | 9 | 6.42 | 156 | 6.54 | 153 |
| | H | 75.30 | 76.60 | 4.50 | 7 | 7.93 | 126 | 8.05 | 124 |
| 80 (3") | L | 87.90 | 88.70 | 3.20 | 10 | 6.72 | 149 | 6.89 | 145 |
| | M | 88.00 | 89.50 | 4.00 | 8 | 8.36 | 120 | 8.53 | 117 |
| | H | 88.00 | 89.50 | 4.80 | 6 | 9.90 | 101 | 10.10 | 99 |
| 100 (4") | L | 113.00 | 113.90 | 3.60 | 9 | 9.75 | 103 | 10.00 | 100 |
| | M | 113.10 | 115.00 | 4.50 | 7 | 12.20 | 82 | 12.50 | 80 |
| | H | 113.10 | 115.00 | 5.40 | 5 | 14.50 | 69 | 14.80 | 68 |
| 125 (5") | M | 138.50 | 140.80 | 4.80 | 6 | 15.90 | 63 | 16.40 | 61 |
| | H | 138.50 | 140.80 | 5.40 | 5 | 17.90 | 56 | 18.40 | 54 |
| 150 (6") | M | 163.90 | 166.50 | 4.80 | 6 | 18.90 | 53 | 19.50 | 51 |
| | H | 163.90 | 166.50 | 5.40 | 5 | 21.30 | 47 | 21.90 | 46 |

Note - Special Sizes Available on Demand

BRAND VALUE OF SASI INDUSTRIES



**Handled by
Professionals**



**Best price in
Industry**



**Assured best
Quality**





Contact Us:

 +91-7701830386

 www.sasiindustries.com

 hello@sasiindustries.com
sasiindustries.mail@gmail.com